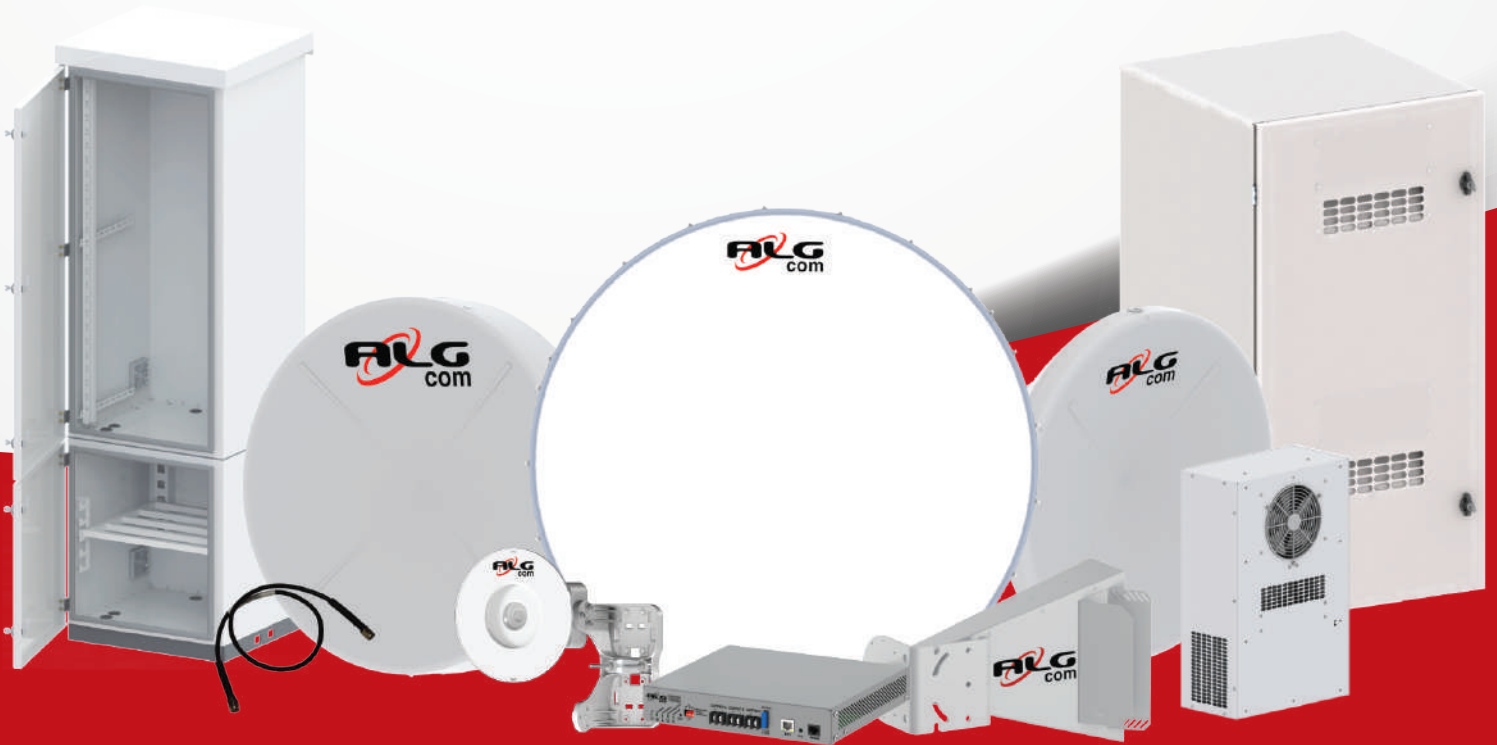


# PRODUCT CATALOG



For the best performance



Antennas



Accessories



DC UPS &  
Converters



Outdoor  
Enclosures



Air Conditioners



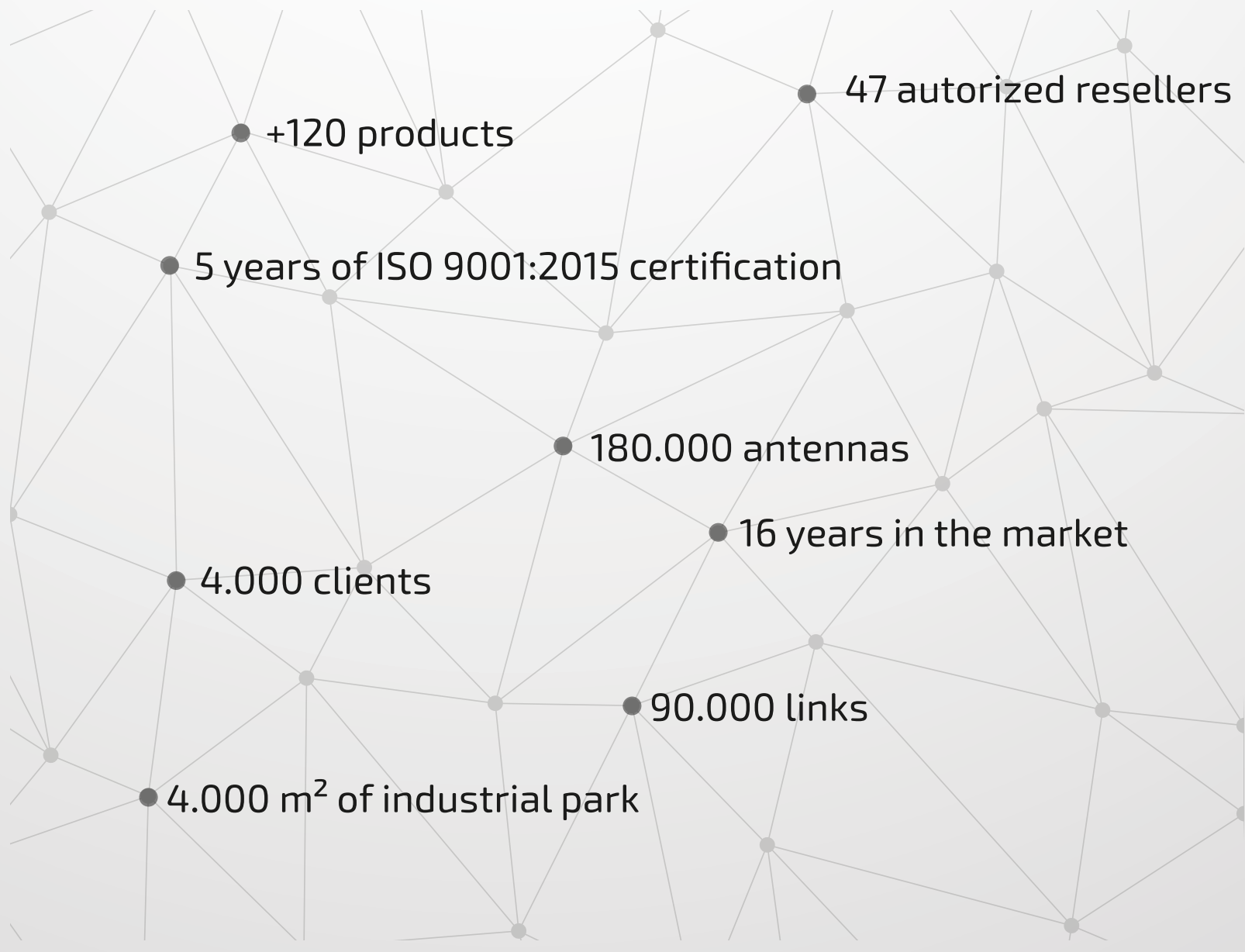
Mounting  
Hardwares

# THE COMPANY

Since 2003, we at ALGCom have continued to bring people together through innovative solutions for the telecommunications market. Throughout this period, we understand the need for innovation. We actively participate in the development of new technologies and products for this sector, which, increasingly, proves to be indispensable to modern society.

In this way, we follow the commitment to constant reinvention, seeking technological solutions for the segment, bringing differentiated service and products aimed at guaranteeing performance.

We are ISO 9001:2015 certified and we always value excellence and the pursuit of company objectives.



# CONTENT

## ANTENNAS

- Symmetrical Horn Antennas
- Assymetrical Horn Antennas
- Wide Band Shielded Sector
- Dish Antennas
- Parabolic Shielded Antennas
- Full Band Parabolic Antennas | UHP
- Extreme Full Band Parabolic Antennas | UHPX
- Microwave Antennas
- OMT for dual polarization
- Grid Antennas
- CPE Antennas
- Directional Broadband Antenna

## ACCESSORIES

- High performance Jumpers
- Armored Boxes

## DC UPS and CONVERTERS

- FN Line
- FX Line
- FC Line | Isolated DC/DC Converter

## RACKS

- Fit Line
- Standard Line
- TurboAir Line
- Battery Compartments

## AIR CONDITIONERS

- Air Conditioners

## MOUNTING HARDWARES

- Galvanized Steel
- Aluminum

# TECHNICAL TERMS

## **Attenuation**

*It is the loss presented by a device.*

## **Copolar**

*When the polarizations of emitter (Tx) and receiver (Rx) are coincident.*

## **Crosspolar**

*When the polarizations of emitter (Tx) and receiver (Rx) are orthogonal.*

## **Crosspolar isolation**

*Isolation level of an antenna in orthogonal polarizations. It is the same as Cross Polarization Discrimination.*

## **Front-to-back Ratio**

*Front-to-back ratio is the gain ratio between the main lobe (where you have the highest concentration of electromagnetic energy) and the back lobe (opposite the main lobe).*

## **Gain**

*It is the ratio between the intensity radiated by the antenna and the intensity radiated by the isotropic antenna. It is usually given in dBi and the direction of greatest irradiation is considered.*

## **Half power angle -3 dB**

*It describes the region around the main direction in which the radiation diagram shows a maximum drop, in relation to the 3dB gain. These angles define the opening of the antenna in the horizontal plane and in the vertical plane.*

## **Main lobe**

*It is the lobe, seen in the radiation diagram, that contains the antenna's maximum gain direction.*

## **Noise suppression**

*Concept developed by ALGcom. It is the average of the values of the normalized radiation diagram between the angles of 90° to 180° for point-to-point antennas and 120° to 180° for point-multipoint antennas, in the initial, central and final frequencies.*

## **Opening angle -6dB**

*It describes the region around the main direction in which the radiation diagram shows a maximum drop, in relation to the 6dB gain. These angles define the opening of the antenna in the horizontal plane and in the vertical plane.*

## **Polarization**

*In an electromagnetic wave, polarization is the direction in which the electric field oscillates.*

## **Port-to-port isolation**

*Isolation level between the two ports of an antenna or device.*

## **Radiation diagram**

*Graph showing the antenna radiation behavior, due to spatial coordinates.*

## **Secondary lobe**

*Those are the lobes, seen in the radiation diagram, that present values lower than the maximum gain of the antenna.*

## **VSWR**

*It is a function of the reflection coefficient, which describes the power reflected in the antenna.*

**ALGcom quality and safety.**  
**Strong quality policy**





# ANTENNAS

We present, through the application of groundbreaking technologies, innovative solutions for the telecommunications sector. We develop products with unique characteristics and excellent performance, which aim to meet the market demands for solutions in free and licensed frequency bands.

1.425 - 1.535 GHz

2.000 - 2.300 GHz

3.700 - 4.300 GHz

4.400 - 5.000 GHz

4.900 - 6.425 GHz

6.250 - 7.125 GHz

7.125 - 8.500 GHz

10.000 - 11.700 GHz

14.200 - 15.350 GHz

17.700 - 19.700 GHz



## HIGH PERFORMANCE

*High performance links in free and licensed frequency bands*

## FLEXIBILITY

*Compatibility with different radio models*

## DURABILITY

*High durability and very low maintenance requirements*

## CONFIABILITY

*All antennas 100% tested, with test report included*

## LIGHTNESS

*100% structural aluminum*



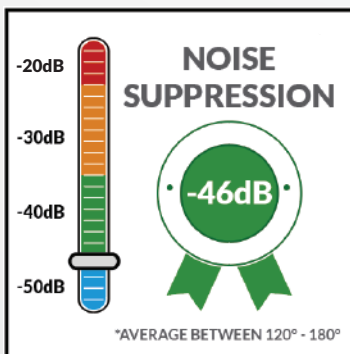
# Symmetrical Horn Antennas

Antennas for point-multipoint links with incredible bandwidth from 4.9 to 6.425 GHz, symmetrical radiation diagrams and easy azimuth and elevation adjustment. The Symmetrical Horn Antennas present the best radiation diagram on the market, with excellent lateral and vertical shielding through the absence of secondary lobes and high front-to-back ratio.

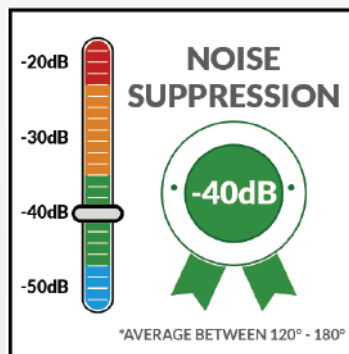


	SH-5800-18-30-DP	SH-5800-13-60-DP	SH-5800-10-90-DP
Half power Angle -3 dB	21.3°	40.9°	61.4°
Opening angle -6 dB	30°	60°	90°
Gain	18.8 dBi	13.6 dBi	10.9 dBi
Frequency	4.900 - 6.425 GHz	4.900 - 6.425 GHz	4.900 - 6.425 GHz
Polarization	Double (V and H)	Double (V and H)	Double (V and H)
Front-to-back ratio	> 40 dB	> 40 dB	> 37 dB
Connection	SMA reverse female or N female	SMA reverse female or N female	SMA reverse female or N female

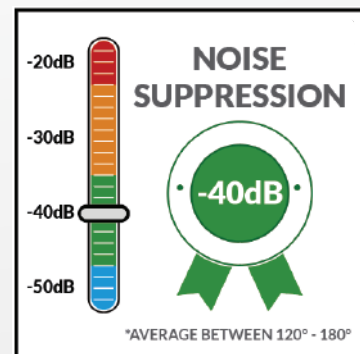
SH-5800-18-30-DP



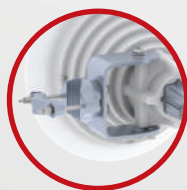
SH-5800-13-60-DP



SH-5800-10-90-DP



## Mounting Hardwares:



Simple Mounting Hardware

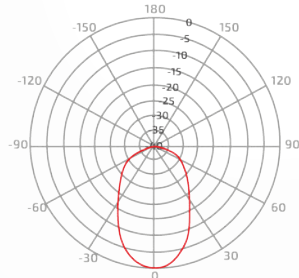


Radio Mounting Hardware

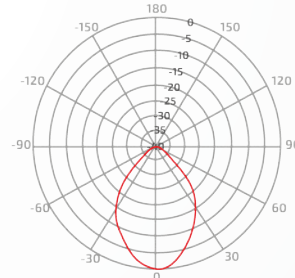
## Radiation diagrams:

In addition to the reliable connection, another important highlight is that the Symmetrical Antennas do not have secondary lobes. This means that they transmit and receive the signal only in the desired direction, protecting the network against noise in dense environments.

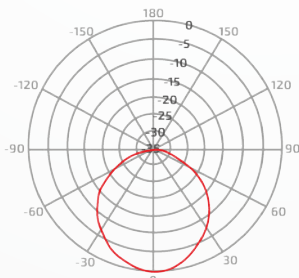
Azimuth SH-5800-18-30-DP



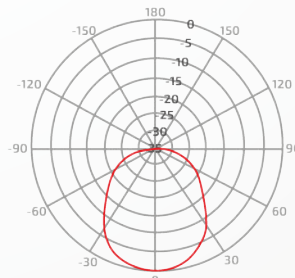
Elevation SH-5800-18-30-DP



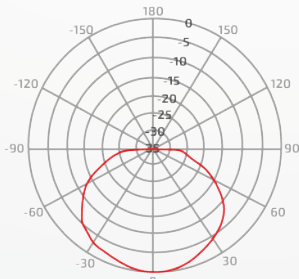
Azimuth SH-5800-13-60-DP



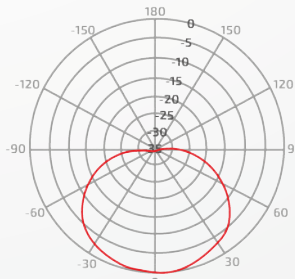
Elevation SH-5800-13-60-DP



Azimuth SH-5800-10-90-DP



Elevation SH-5800-10-90-DP



Get to know more:



Symmetrical Horn  
Antenna 30°



Symmetrical Horn  
Antenna 90°:  
radio hardware mounting



Symmetrical Horn  
Antenna:  
back view

# Assymetrical Horn Antennas

Those antennas provide twice the coverage with the same gain as conventional panels. Present excellent armor through the reduction of secondary lobes and high front-to-back ratio, in addition to excellent cost-benefit.

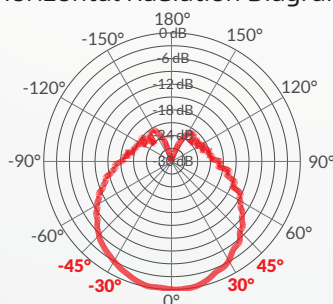


	PD-5800-15-60-DP	PD-5800-15-60-DP STS	PD-5800-15-60-DP STN
Half power angle -3 dB (V)	18°	18°	18°
Half power angle -3 dB (H)	60°	60°	60°
Opening angle -6 dB (H)	90°	90°	90°
Gain	15.0 dBi	15.0 dBi	15.0 dBi
Frequency	5.250 - 5.875 GHz	5.250 - 5.875 GHz	5.250 - 5.875 GHz
Polarization	Double (V and H)	Double (V and H)	Double (V and H)
Front-to-back ratio	> 30 dB	> 30 dB	> 30 dB
Connection	SMA reverse female	SMA reverse female	N female

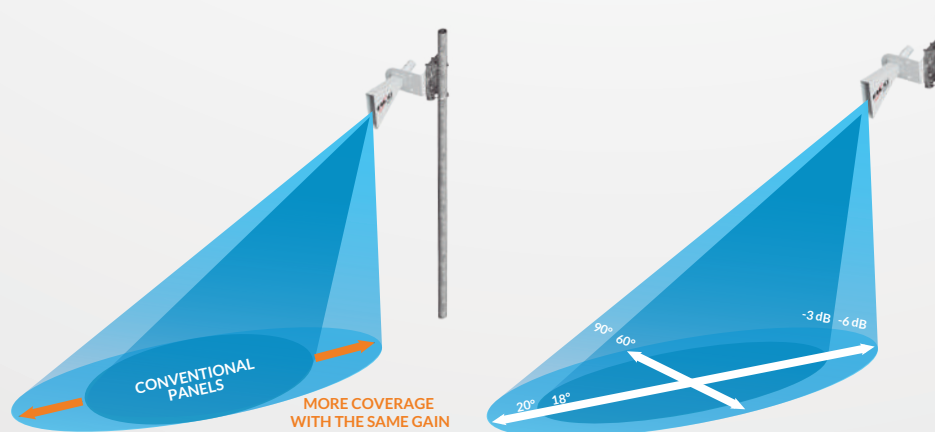
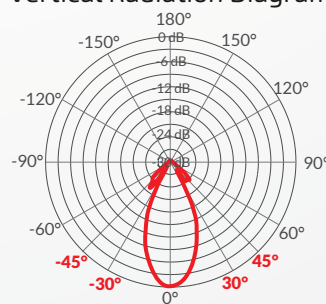
Frequency Reuse



Horizontal Radiation Diagram



Vertical Radiation Diagram



Optionals to model PD-5800-15-60-DP:



Master Armored Box



Fit Armored Box



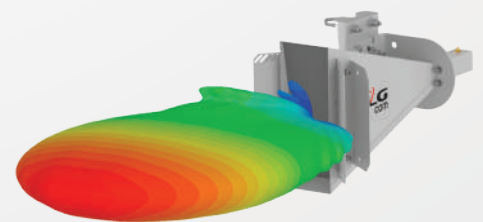
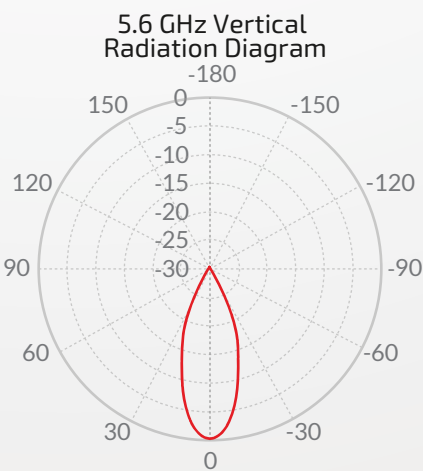
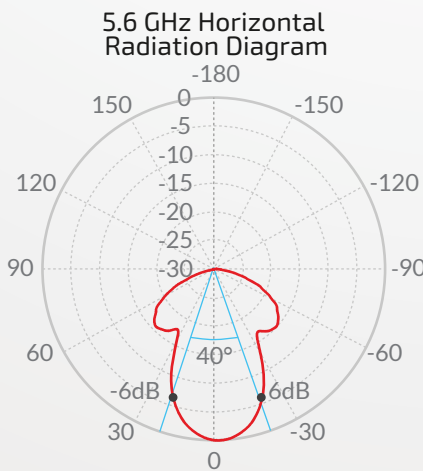
Radio Fixing Kit



## Wide Band Shielded Sector

The Wide Band Shielded Sector offers high gain, high vertical opening and maximum reduction of secondary lobes, achieving performance class SS2 ANATEL. This antenna offers excellent coverage with the best signal-to-noise ratio and increases the network's immunity against noise and interference, so it is possible to deploy more equipment in the same location. The antenna has been designed and tested to operate in the highest frequency range in the market: from 4.9 to 6.425 GHz, guaranteeing all the properties of diagram, insulation and VSWR in this entire band. This allows its use in a wide range of applications, in addition to meeting the standards of international organizations such as FCC and ETSI.

	PD-5800-19-30-DP-UWB
Half power angle -3 dB (V)	13°
Half power angle -3 dB (H)	30°
Opening angle -6 dB	40°
Gain	19.3 dBi
Frequency	4.900 - 6.425 GHz
Polarization	Double (V and H)
Front-to-back ratio	> 37 dB
Connection	SMA reverse female



Radiation Diagram

### Optionals:



Master Armored Box



Fit Armored Box



Radio Fixing Kit



## Dish Antennas

Products with excellent cost-benefit and great bandwidth, the Dish Antennas are indicated for point-to-point links, in low noise environment. Their links are stable and have maximum throughput over short and long distances.



	PA-5800-29-06-DP	PA-5800-32-09-DP	PA-5800-35-12-DP
<b>Diameter</b>	0.6m   2 ft	0.9m   3 ft	1.2m   4 ft
<b>Gain</b>	28.5 dBi	33.5 dBi	35.8 dBi
<b>Frequency</b>	4.900 - 5.875 GHz	4.900 - 5.875 GHz	4.900 - 5.875 GHz
<b>Polarization</b>	Double (V and H)	Double (V and H)	Double (V and H)
<b>Front-to-back ratio</b>	> 40 dB	> 54 dB	> 57 dB
<b>Accessories</b>	Radio fixing kit and jumpers	Radio fixing kit, jumpers and armored boxes	Radio fixing kit, jumpers and armored boxes



	PA-6100-30-06-DP	PA-6100-33-09-DP	PA-6100-35-12-DP
<b>Diameter</b>	0.6 m   2 ft	0.9 m   3 ft	1.2 m   4 ft
<b>Gain</b>	30.3 dBi	33.0 dBi	35.3 dBi
<b>Frequency</b>	5.500 - 6.425 GHz	5.500 - 6.425 GHz	5.500 - 6.425 GHz
<b>Polarization</b>	Double (V and H)	Double (V and H)	Double (V and H)
<b>Front-to-back ratio</b>	> 42 dB	> 46 dB	> 50 dB
<b>Accessories</b>	Radio fixing kit and jumpers	Radio fixing kit, jumpers and armored boxes	Radio fixing kit, jumpers and armored boxes

# Parabolic Shielded Antennas

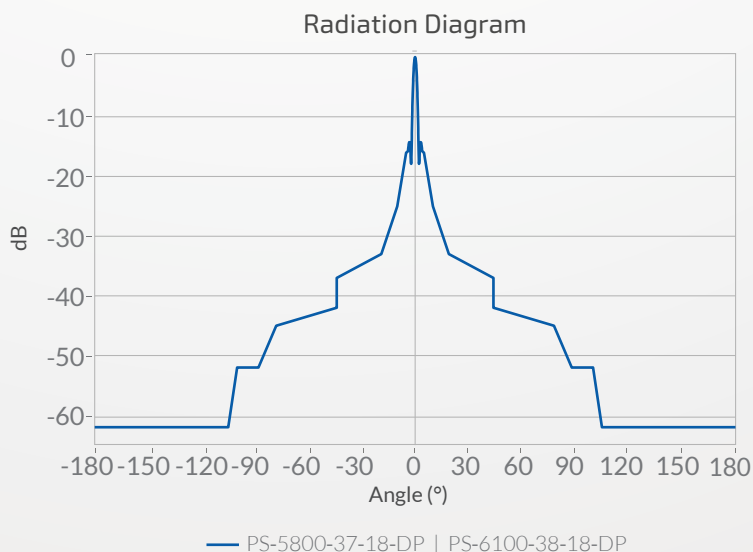
## Long distance links

Those antennas count with side shielding that results in greater efficiency in irradiation, even in places with high interference. Its radome increases the useful life and performance of links on rainy days. They provide more stable links with maximum throughput and secondary lobes suppressed at levels below -40 dB.

They come with a radio fixing kit and have two Armored Boxes models as options, ensuring versatility, protection and insulation for the radio.



	PS-5800-37-18-DP	PS-6100-38-18-DP
<b>Diameter</b>	1.8 m   6 ft	1.8 m   6 ft
<b>Gain</b>	38.2 dBi	38.5 dBi
<b>Frequency</b>	5.250 - 5.875 GHz	5.500 - 6.425 GHz
<b>Polarization</b>	Double (V and H) or Slant ( $\pm 45^\circ$ )	Double (V and H) or Slant ( $\pm 45^\circ$ )
<b>Front-to-back ratio</b>	> 61 dB	> 59 dB



### Optionals:



Master Armored Box



Fit Armored Box

# Full Band Parabolic Antennas | UHP

The Full Band Parabolic Antennas feature the Deep Dish Reflector in their design.

This reflector is deeper in comparison to the parabolic reflectors that we used until then, providing the same gain that we already obtained, but with an incredibly greater bandwidth for point-to-point links: from 4.9 to 6.425 GHz. Its deeper shape promotes excellent shielding over the entire frequency band of the antenna, making the use of the shield between the radome and the reflector for this type of shielding unnecessary.

In addition, it has exceptional VSWR across the frequency band. The antennas are lighter and the assembly much easier and faster.

The mounting hardware's provide precise adjustments in elevation and azimuth. They also have  $\pm 45^\circ$  Slant Polarization.

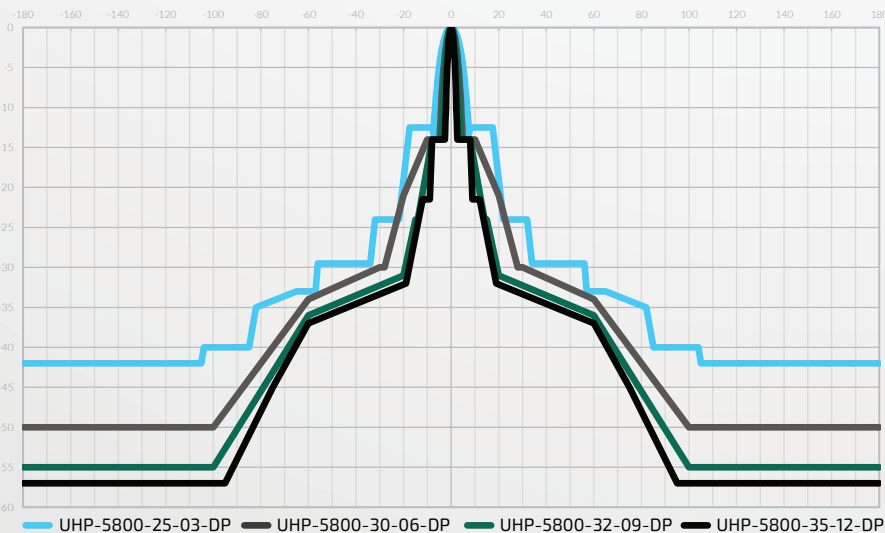


Deep Dish reflector

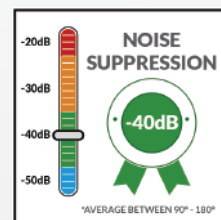


	UHP-5800-25-03-DP	UHP-5800-30-06-DP	UHP-5800-32-09-DP	UHP-5800-35-12-DP
Diameter	0.3 m   1 ft	0.6 m   2 ft	0.9 m   3 ft	1.2 m   4 ft
Gain	26.8 dBi	30.5 dBi	33.2 dBi	36.0 dBi
Frequency	4.900 - 6.425 GHz	4.900 - 6.425 GHz	4.900 - 6.425 GHz	4.900 - 6.425 GHz
Polarization	Double (V and H) or Slant ( $\pm 45^\circ$ )	Double (V and H) or Slant ( $\pm 45^\circ$ )	Double (V and H) or Slant ( $\pm 45^\circ$ )	Double (V and H) or Slant ( $\pm 45^\circ$ )
Front-to-back ratio	> 40 dB	> 48 dB	> 55 dB	> 57 dB

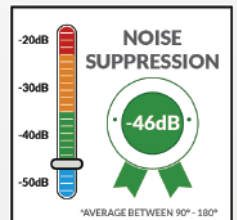
Radiation Diagram



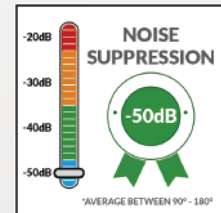
UHP-5800-25-03-DP



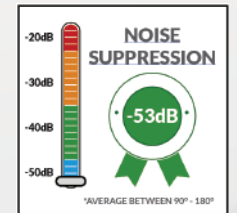
UHP-5800-30-06-DP



UHP-5800-32-09-DP



UHP-5800-35-12-DP



## Optionals:



Master Armored Box



Fit Armored Box

# Extreme Full Band Parabolic Antennas | UHPX

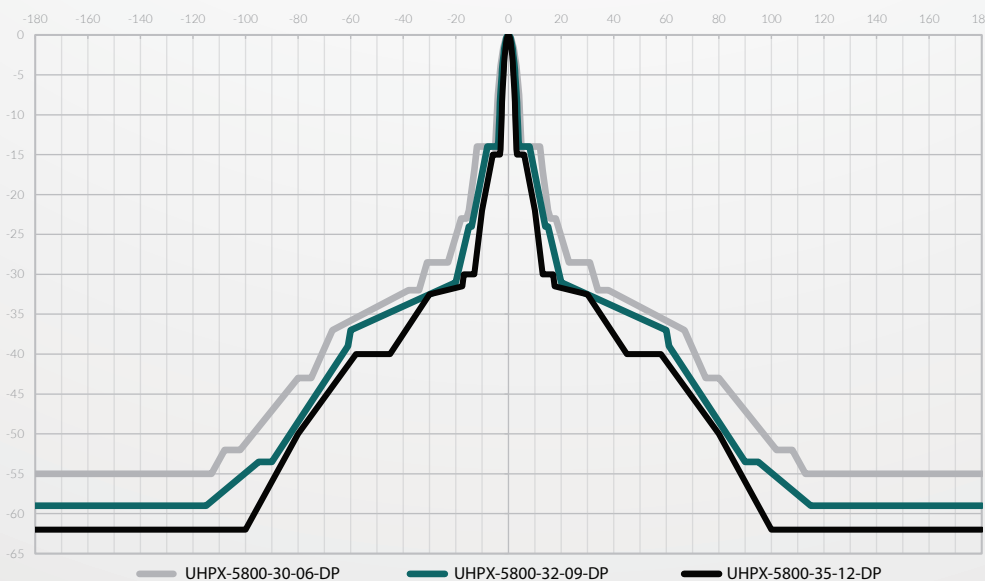
The Extreme Full Band Parabolic Antennas feature the Deep Dish Reflector in their design, which works in conjunction with the shield and RF absorbing foam, providing EXTREME noise rejection, making the UHPX parabolas perfect for local installation with extreme interference.

Its reflector is deeper in comparison to the parabolic reflectors that we used until then, providing the same gain that we already obtained, but with an incredibly greater bandwidth for point-to-point links: from 4.9 to 6.425 GHz. In addition, it has exceptional VSWR across the frequency band and excellent port-to-port isolation. Its mounting hardware's provide precise adjustments in elevation and azimuth and have  $\pm 45^\circ$  Slant Polarization.



	UHPX-5800-30-06-DP	UHPX-5800-32-09-DP	UHPX-5800-35-12-DP
Diameter	0.6 m   2 ft	0.9 m   3 ft	1.2 m   4 ft
Gain	30.5 dBi	33.2 dBi	36.0 dBi
Frequency	4.900 - 6.425 GHz	4.900 - 6.425 GHz	4.900 - 6.425 GHz
Polarization	Double (V and H) or Slant ( $\pm 45^\circ$ )	Double (V and H) or Slant ( $\pm 45^\circ$ )	Double (V and H) or Slant ( $\pm 45^\circ$ )
Front-to-back ratio	> 55 dB	> 59 dB	> 62 dB

Radiation Diagram



UHPX-5800-30-06-DP



UHPX-5800-32-09-DP



UHPX-5800-35-12-DP



## Optionals:



Master Armored Box



Fit Armored Box

# Microwave Antennas

## Licensed links

The Microwave Antennas have lateral shielding and RF absorbing foams, offering greater radiation efficiency and significant reduction of secondary lobes. They were developed to obtain greater gain with less interference, in addition to being compact products and with less wind area.



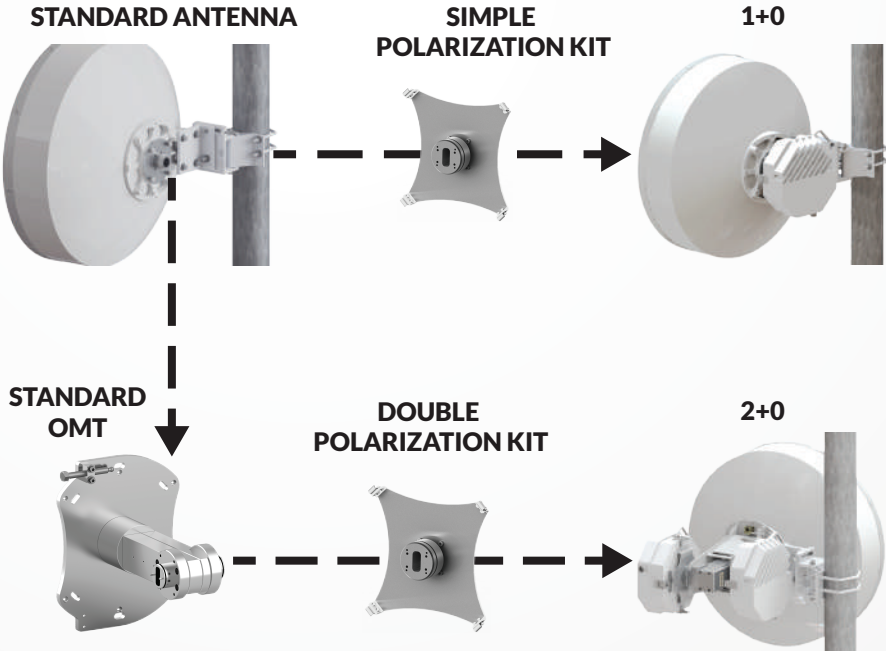
	PS-4000-26-06 PS-4000-29-09 PS-4000-31-12 PS-4000-34-18				PS-4800-27-06 PS-4800-30-09 PS-4800-32-12 PS-4800-36-18				PS-6100-38-18	PS-6800-31-06-DP PS-6800-34-09-DP PS-6800-36-12-DP PS-6800-38-18-DP				PS-6800-34-09-DP-UHP PS-6800-36-12-DP-UHP PS-6800-38-18-DP-UHP PS-6800-41-24-DP-UHP			
Diameter	0.6 m   2 ft	0.9 m   3 ft	1.2 m   4 ft	1.8 m   6 ft	0.6 m   2 ft	0.9 m   3 ft	1.2 m   4 ft	1.8 m   6 ft	1.8 m   6 ft	0.6 m   2 ft	0.9 m   3 ft	1.2 m   4 ft	1.8 m   6 ft	0.9 m   3 ft	1.2 m   4 ft	1.8 m   6 ft	2.4 m   7 ft
Gain	27.5 dBi	30.0 dBi	32.2 dBi	35.4 dBi	29.0 dBi	31.5 dBi	33.8 dBi	37.1 dBi	38.5 dBi	29.3 dBi	34.6 dBi	36.6 dBi	39.1 dBi	34.2 dBi	36.1 dBi	39.1 dBi	42.0 dBi
Frequency	3.700 - 4.300 GHz				4.400 - 5.000 GHz				5.500 - 6.425 GHz	6.425 - 7.125 GHz				6.250 - 7.125 GHz			
Polarization	Double (V and H)				Double (V and H)				Double (V and H) or Slant (±45°)	Simple or Double (V and H)				Double (V and H)			
Front-to-back ratio	> 35 dB	> 44 dB	> 52 dB	> 57 dB	> 35 dB	> 44 dB	> 52 dB	> 57 dB	59 dB	> 45 dB	> 57 dB	> 61 dB	> 63 dB	> 58 dB	> 62 dB	> 65 dB	> 68 dB



	PS-7800-32-06 PS-7800-35-09 PS-7800-37-12 PS-7800-39-18				PS-7800-35-09-DP-UHP PS-7800-37-12-DP-UHP PS-7800-39-18-DP-UHP PS-7800-42-24-DP-UHP				PS-10900-30-03-DP-EXPORT PS-10900-34-06-DP PS-10900-37-09-DP PS-10900-39-12-DP				PS-15000-37-06-DP-UHP PS-15000-41-09-DP-UHP PS-15000-43-12-DP-UHP			PS-18000-35-03-DP-UHP PS-18000-39-06-DP-UHP PS-18000-43-09-DP-UHP PS-18000-45-12-DP-UHP			
Diameter	0.6 m   2 ft	0.9 m   3 ft	1.2 m   4 ft	1.8 m   6 ft	0.9 m   3 ft	1.2 m   4 ft	1.8 m   6 ft	2.4 m   7 ft	0.3 m   1 ft	0.6 m   2 ft	0.9 m   3 ft	1.2 m   4 ft	0.6 m   2 ft	0.9 m   3 ft	1.2 m   4 ft	0.3 m   1 ft	0.6 m   2 ft	0.9 m   3 ft	1.2 m   4 ft
Gain	31.7 dBi	35.6 dBi	37.7 dBi	40.6 dBi	35.0 dBi	37.1 dBi	40.6 dBi	41.6 dBi	30.0 dBi	34.9 dBi	37.4 dBi	39.6 dBi	37.8 dBi	41.0 dBi	43.4 dBi	35.5 dBi	39.1 dBi	43.2 dBi	45.6 dBi
Frequency	7.125 - 8.500 GHz				7.125 - 8.500 GHz				10.000 - 11.700 GHz				14.200 - 15.350 GHz			17.700 - 19.700 GHz			
Polarization	Simple or Double (V and H)				Simple or Double (V and H)				Simple or Double (V and H)				Double (V and H)			Double (V and H)			
Front-to-back ratio	> 54 dB	> 57 dB	> 60 dB	> 63 dB	> 59 dB	> 63 dB	> 65 dB	> 68 dB	> 48 dB	> 55 dB	> 58 dB	> 60 dB	> 68 dB	> 70 dB	> 71 dB	> 60 dB	> 67 dB	> 70 dB	> 72 dB

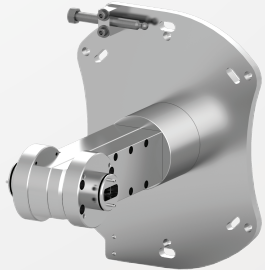


# Interchangeability option for Microwave Antennas:



## OMT for dual polarization

Complete solution for dual polarization Microwave Antennas and customizable fit for different radio models. It has a fixation system with fine adjustment of cross polarization discrimination (XPD) and direct coupling for several radio models or connection by flexible waveguide.



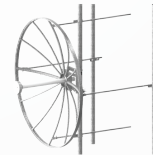
	OMT-6800-AD	OMT-6800-GO	OMT-7800-AD	OMT-7800-GO
<b>Frequency</b>	6.425 - 7.125 GHz		7.125 - 8.500 GHz	
<b>VSWR</b>	Typical: 1,3 Maximum: 1,4			
<b>Compatible Radios</b>	Cambium, Ceragon, Ericsson, Huawei, SIAE, Wi2Be, Youncta			

## Grid Antennas

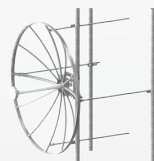
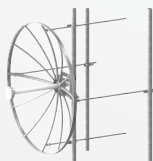
With unmatched mechanical precision, the Grid Antennas were developed with innovative and patented technology in the construction of the reflection surface and radiant element.

They have the best radiation efficiency condition, with perfect symmetry in all copolar and crosspolar vectors in the reflection of the parabolic surface. Thus, they reach a value greater than -30 dB of crosspolar insulation ( $\pm 1$  dB angle). In other words, an innovation in the market, for low frequency radios.

In addition, they have the smallest Wind Exposure Area on the market.



	PV-1500-23-12-DP PV-1500-27-20-DP PV-1500-31-30-DP PV-1500-33-40-DP				PV-2150-25-12-DP PV-2150-29-20-DP PV-2150-33-30-DP PV-2150-35-40-DP			
Diameter	1.2 m   4 ft	2.0 m   6.5 ft	3.0 m   9.8 ft	4.0 m   13 ft	1.2 m   4 ft	2.0 m   6.5 ft	3.0 m   9.8 ft	4.0 m   13 ft
Gain	23 dBi	27 dBi	31 dBi	33 dBi	25.2 dBi	29.3 dBi	33.3 dBi	35.2 dBi
Frequency	1.425 - 1.535 GHz				2.000 - 2.300 GHz			
Polarization	Double (V and H)				Double (V and H)			
Front-to-back ratio	> 37 dB	> 38 dB	> 43 dB	> 46 dB	> 34 dB	> 37 dB	> 42 dB	> 44 dB



	PV-4000-30-12-DP PV-4000-35-20-DP PV-4000-38-30-DP PV-4000-41-40-DP				PV-4800-31-12-DP PV-4800-25-20-DP PV-4800-39-30-DP PV-4800-41-40-DP				PV-5800-38-20-DP PV-5800-42-30-DP	
Diameter	1.2 m   4 ft	2.0 m   6.5 ft	3.0 m   9.8 ft	4.0 m   13 ft	1.2 m   4 ft	2.0 m   6.5 ft	3.0 m   9.8 ft	4.0 m   13 ft	2.0 m   6.5 ft	3.0 m   9.8 ft
Gain	30.9 dBi	35.3 dBi	38.8 dBi	41.3 dBi	31.1 dBi	35.8 dBi	39.3 dBi	41.8 dBi	38.5 dBi	42.0 dBi
Frequency	3.700 - 4.000 GHz				4.400 - 5.000 GHz				5.100 - 6.000 GHz	
Polarization	Double (V and H)				Double (V and H)				Double (V and H)	
Front-to-back ratio	> 37 dB	> 41.4 dB	> 44.9 dB	> 47.4 dB	> 35 dB	> 40 dB	> 42 dB	> 44 dB	> 40 dB	> 43 dB

## CPE Antennas

*Innovative solution for communication with end customers at 2.5 GHz frequency. Developed with the latest technology and using state-of-the-art RF device tools. It has an intelligent layout, resulting in a small, light, robust and cost-effective product. Includes radio fixing kit and does not require additional jumpers, facilitating assembly and installation. E*

*xclusive product recommended by radio manufacturer Cambium.*

	PD-2500-10-40-DP
Gain	9.4 dBi
Frequency	2.570 - 2.620 GHz
Polarization	Double (V and H)
Front-to-back ratio	> 15 dB



## Directional Broadband Antenna

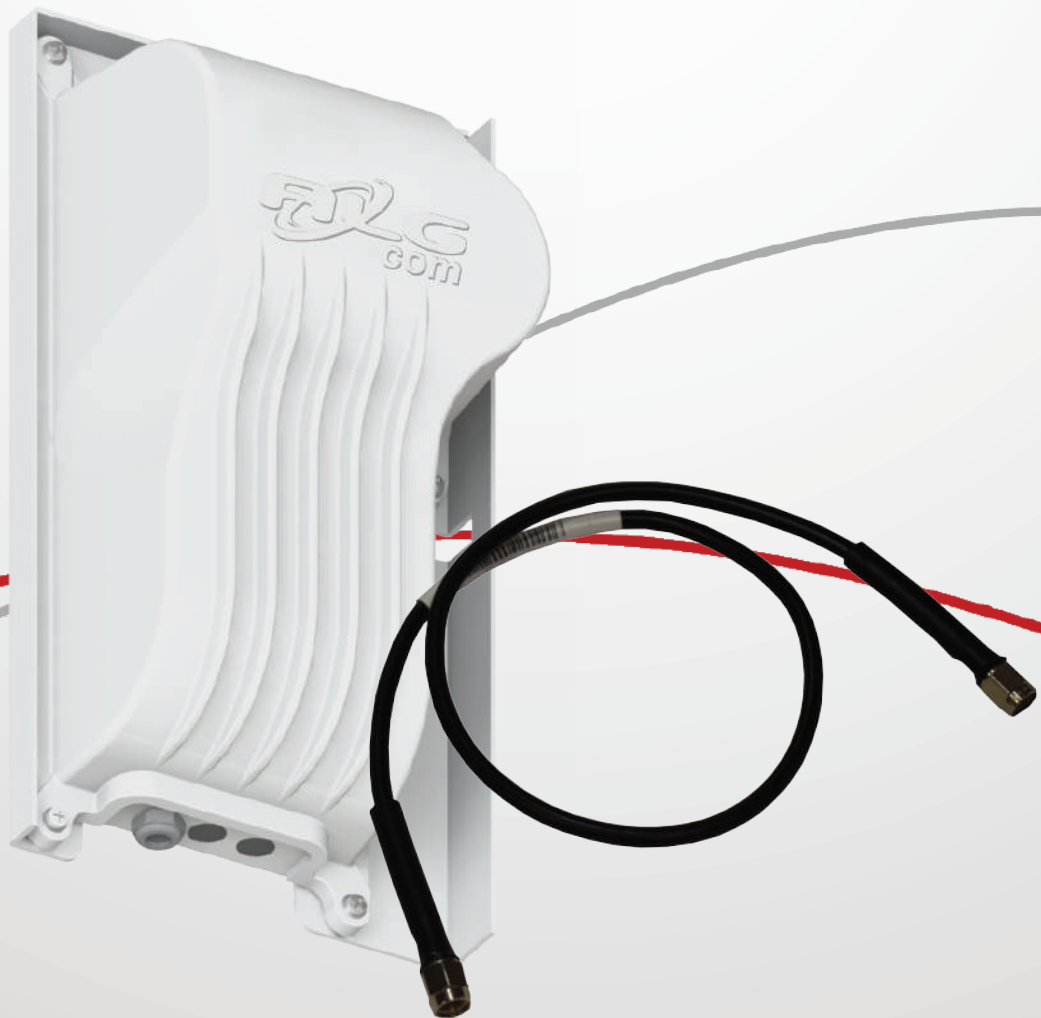
*Antenna with compact design and dielectrically sealed, eliminating contact with air or gases. If used in conjunction with the surge protector, its metallic structure remains fully grounded, thus eliminating the risk of emitting voltage arcs. It is an excellent solution for applications with GPRS modem.*

	PS-880-1900-10-00
Gain	9 dBi
Frequency	806 - 2200 MHz
Polarization	Simple (V and H)
Front-to-back ratio	> 26 dB



# ACCESSORIES

Complete line of accessories to meet all needs. Light and resistant parts that ensure that the links achieve the best performance.



## FLEXIBILITY

*Compatible with various models to meet all your needs*

## HIGH PERFORMANCE

*High-performance links*

## DURABILITY

*High durability and very low maintenance requirements*

## PROTECTION

*Weather proof and corrosion resistance*

WARRANTY

**1**  
YEAR

## Armored Boxes

ALGcom Armored Boxes were developed to protect internal equipment against bad weather and to prevent external noise disturbing the link operation.

In addition, the protection provides increased equipment life. Due to their universal fit, they can be used in several radio models, with easy installation and handling.



	FIT CB-31-20-14-AP	MASTER CB-44-24-14-AP
<b>Material</b>	Aluminum	Aluminum
<b>Compatible Radios</b>	MikroTik Router Boards and Intelbras APC-5M	MikroTik Router Boards, NetBox5, NetMetal5, Intelbras APC-5M and Ubiquiti Rocket
<b>Compatible Antennas</b>	1.2m Dish Antenna UHP Antennas, UHPX Antennas and Assymetrical Horn Antennas	0.9m* and 1.2m** Dish Antennas UHP Antennas, UHPX Antennas and Assymetrical Horn Antennas

\*A model

\*\* B model



# High performance Jumpers

Products designed with modern and automated methodology. They have been developed with flexible cables and tin finish, offering excellent shielding.

They have the lowest VSWR on the market, less than 0.8 dB/m of attenuation, ensuring stability and low link loss.

The jumpers are tested in a strict quality control process, undergoing precision testing, in order to guarantee the best performance of the product.



## Connections type:

Serie	N		SMA			
Connection Type	N-MALE	N-FEMALE	SMA-MALE	SMA-REVERSE MALE	SMA-FEMALE	SMA-REVERSE FEMALE
Image						

## Available connections:



Connection  
NM-MMCX



Connection  
SMAMR-MMCX



Connection  
NM-NM



Connection  
SMAMR-NM



Connection  
SMAMR-SMAMR

# DC UPS and CONVERTERS

Compact and easy to install, the lines of DC UPS and Converters have smart battery chargers and also offer the possibility of using an SNMP interface for remote management.

All ALGcom DC UPS and converters are 1U high, developed especially for the telecom segment.



## ENERGY

*Ensures continuous energy, even during power outages and blackouts*

## PROTECTION

*Against surges, overvoltages, drops, undervoltages, noise and electrical faults*

## DURABILITY

*High durability and very low maintenance requirements*

## TECNOLOGY

*Smart battery charger*

WARRANTY

**1**  
YEAR

# FN Line

The FN Line has been developed to protect your equipment against surges and failures, ensuring excellent performance and preventing from possible problems in the field.



	12V 20A	24V 10A	24V 15A	-48V 5A	-48V 10A
Output voltage	240 W	240 W	360 W	270 W	540 W
Programmable charger	1, 3, 5 or 10A	1, 3 or 5A	1, 3, 5 or 10A	1, 3 or 5A	1, 3 or 5A
Efficiency	> 92%	> 92%	> 92%	> 92%	> 92%

With SNMP Protocol (remote management):

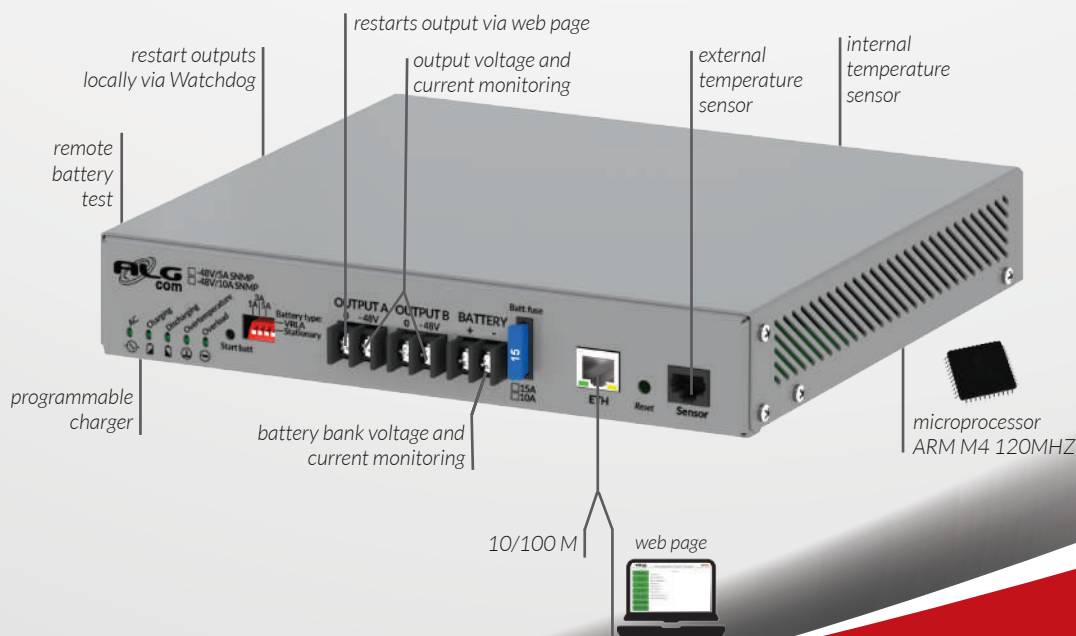


	12V 20A	24V 10A	24V 15A	-48V 5A	-48V 10A
Output voltage	240 W	240 W	360 W	270 W	540 W
Programmable charger	1, 3, 5 or 10A	1, 3 or 5A	1, 3, 5 or 10A	1, 3 or 5A	1, 3 or 5A
Efficiency	> 92%	> 92%	> 92%	> 92%	> 92%

## Understand SNMP Protocol:

The remote management allows access to information via the DC UPS' 10/100 physical ethernet interface. You can check the parameters remotely via: accessing a web page or receiving via the SNMP protocol. The remote controls accepted are for resetting the output and for testing the battery's durability.

For ALGcom DC UPS, integration with monitoring software such as Zabbix, Nagios, PRTG and The Dude is facilitated by providing its own templates.



## FX Line

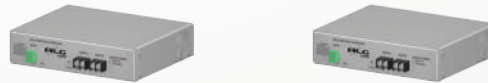
The FX Line has been developed to protect your equipment against surges and failures, ensuring excellent performance, preventing your equipment from possible problems in the field and has great cost-benefit.



	12V 10A	24V 7A
Output voltage	120 W	168 W
Programmable charger	1, 2 or 3A	1, 2 or 3A
Efficiency	> 90%	> 90%

## FC Line | Isolated DC/DC Converter

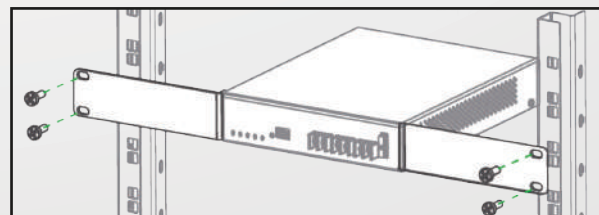
The FC Line - Isolated DC/DC Converters was developed to supply 12V or 24V equipment from a  $\pm 48V$  DC power supply, ensuring excellent galvanic isolation and avoiding ground loops in systems with different grounds, at 24V / 12V with 48V.



	$\pm 48V$ TO 12V/10A	$\pm 48V$ TO 24V/5A
Input Voltage	44V - 58V	44V - 58V
Output Voltage	12V	24V
Isolation	> 3000 VAC	> 3000 VAC
Output current	10A	5A

## Fixing Tabs

All ALGcom DC UPS and converters come with fixing tabs for 19" outdoor racks. The product occupies only 1U high.



# OUTDOOR RACKS

Developed in galvanized steel or aluminum, the outdoor racks offer protection and security for your equipment.

In different sizes and with options such as trays and exhaust kits, some of this equipment has exclusive compartment for batteries, anti-vandalism system and automotive rubber for sealing.



## SECURITY

*Anti-vandalism protection with metal locking hinges and locks*

## FLEXIBILITY

*Different sizes, adjustments and options to meet all your needs*

## FAN

*Excellent air circulation system through exhaustion*

## ARTICULATION

*Easy cable installation and maneuvering*

## SHIELDING

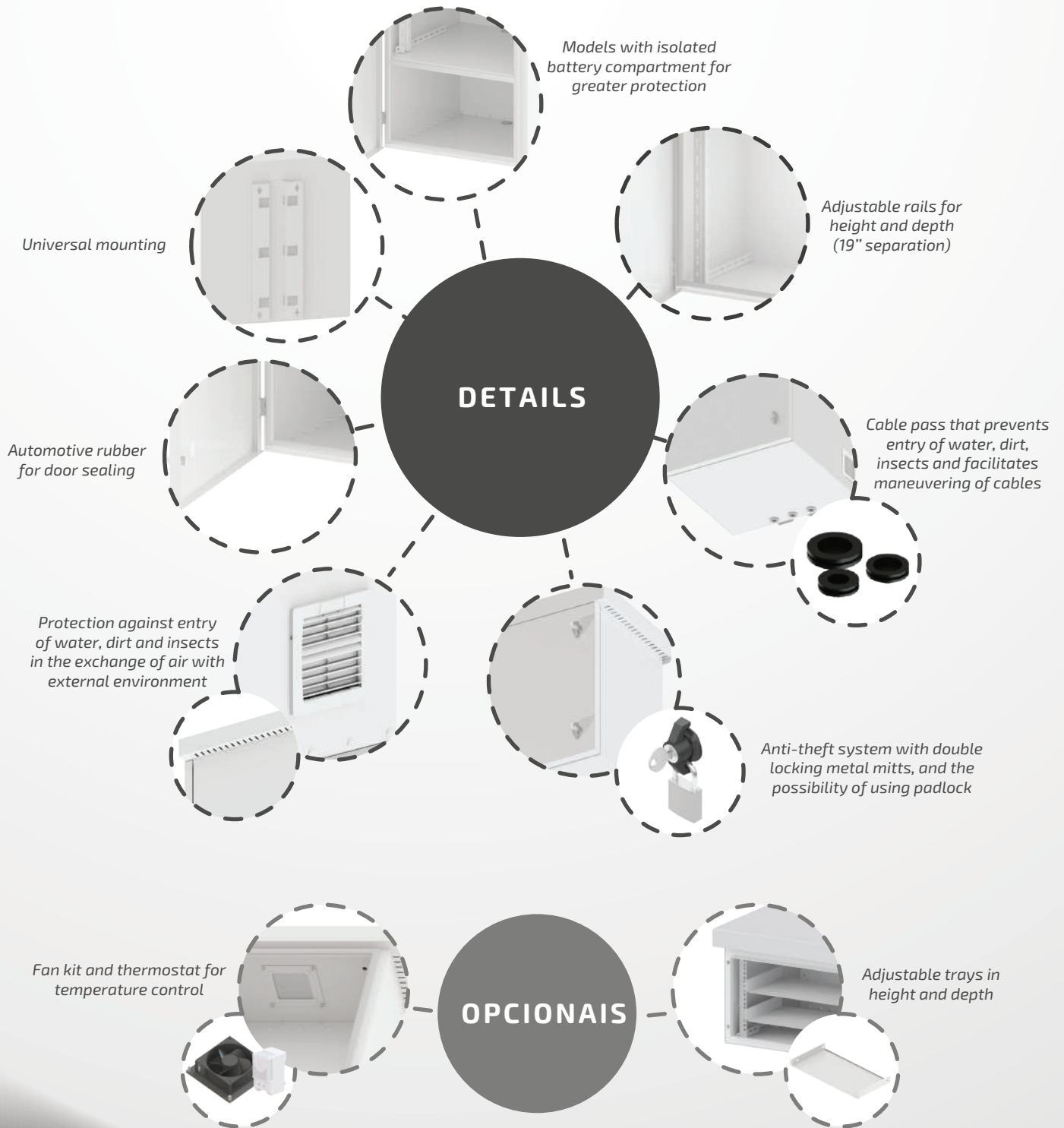
*Protection against ingress of water, dirt and insects*

WARRANTY

**1**  
YEAR



# Discover the differentials of the ALGcom Outdoor Racks line:



# Fit Line

## Built in galvanized steel

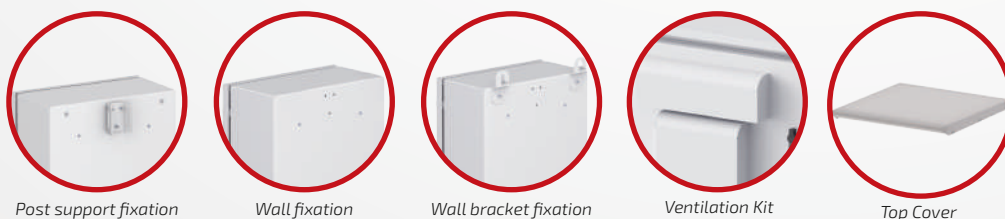
With better cost-benefit, it allows the equipment installation in places with limited space, providing greater flexibility in the accommodation of devices. Developed in galvanized steel, it is resistant to corrosion and weather.

### Wall or pole and floor fixing outdoor enclosures:



	GQ-50-40-20-AC-ECP	GO-12-19-50-AC-STB	GO-24-19-50-AC-ST
Fixation type	Pole or Wall	Floor	Floor
Battery Compartment	-	28 cm	-
Internal dimensions (height x width x depth)	49.9 X 39.7 X 16 cm	57 X 51 X 54.5 cm	109 X 51 X 54.5 cm
External dimensions (height x width x depth)	50.2 X 40 X 21.5 cm	97 X 57 X 59 cm	121 X 57 X 59 cm
Volume	76 liters	290 liters	370 liters
Weight	10.36 kg	40 kg	45 kg

### Optionals for Control Panel:



Post support fixation

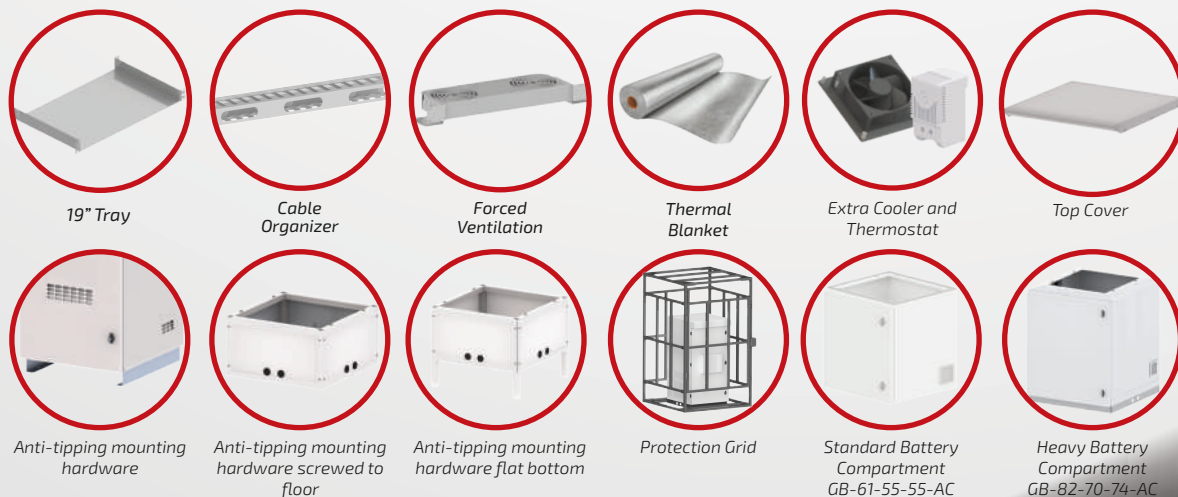
Wall fixation

Wall bracket fixation

Ventilation Kit

Top Cover

### Optionals for floor outdoor enclosures:



19" Tray

Cable Organizer

Forced Ventilation

Thermal Blanket

Extra Cooler and Thermostat

Top Cover

Anti-tipping mounting hardware

Anti-tipping mounting hardware screwed to floor

Anti-tipping mounting hardware flat bottom

Protection Grid

Standard Battery Compartment GB-61-55-55-AC

Heavy Battery Compartment GB-82-70-74-AC

## Pole fixing outdoor enclosures:



	GO-06-19-28-AC-ECP	GO-10-19-28-AC-ECP	GO-06-19-50-AC-ST	GO-06-19-50-AC-STB	GO-10-19-50-AC-ST
<b>Fixation type</b>	Pole	Pole	Pole	Pole	Pole
<b>Battery Compartment</b>	-	-	-	29.5 cm	-
<b>Internal dimensions</b> (height x width x depth)	32 X 49 X 26 cm	50 X 49 X 26 cm	33 X 51 X 54.5cm	33.5 X 51 X 54.5 cm	51 X 51 X 54.5cm
<b>External dimensions</b> (height x width x depth)	32.3 X 55.5 X 34 cm	50.3 X 55.5 X 34 cm	33.5 X 57 X 59 cm	63.5 X 57 X 59 cm	51.5 X 57 X 59 cm
<b>Volume</b>	60 liters	94 liters	112 liters	194 liters	175 liters
<b>Weight</b>	12.5 kg	20 kg	21 kg	33 kg	29 kg

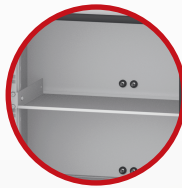
### Optionals:



Ventilation Kit\*



Top Cover



19" Tray



Forced Ventilation\*\*



Cable Organizer\*\*

\*Available only for models GO-06-19-28-AC-ECP, GO-10-19-28-AC-ECP, GO-06-19-50-AC-ST, GO-10-19-50-AC-ST

\*\*Available only for models GO-06-19-50-AC-STB, GO-06-19-50-AC-ST, GO-10-19-50-AC-ST.

### Get to know more:



Fast System rails and cable pass



6U Outdoor Enclosure: automotive rubber seal detail



12U Outdoor Enclosure: applied options (top cover and simple base)

# Standard Line

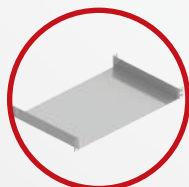
## Built in aluminum

With versatile assembly, quick and easy installation and universal supports, the Standard Line is developed in aluminum and is resistant against corrosion and bad weather. It has an automotive sealing system, preventing dust and insect entrapment and greater safety for equipment.



	GO-06-19-50-AL-ST	GO-10-19-50-AL-ST	GO-12-19-30-AL-PO	GO-12-19-50-AL-STB	GO-24-19-50-AL-ST
Fixation type	Floor	Floor	Pole	Floor	Floor
Battery Compartment	-	-	-	28,6 cm	-
Internal dimensions (height x width x depth)	32 x 49 x 47 cm	49.5 x 49 x 47 cm	58.5 x 53 x 26 cm	58.5 x 49 x 47 cm	112 X 49 X 47 cm
External dimensions (height x width x depth)	38 x 55.4 x 51 cm	56 x 55.4 x 51 cm	65 x 60 x 28 cm	102 x 55.4 x 51 cm	123.5 X 55.4 X 51 cm
Volume	82 liters	127 liters	90 liters	155 liters	285 liters
Weight	11 kg	14 kg	12,5 kg	23 kg	25 kg

### Optionals:



Tray



Extra cooler and thermostat



Cable Organizer



Forced Ventilation



Protection Grid



Standard battery compartment GB-60-55-50-AC\*

\*Exclusive to models GO-12-19-50-AL-STB and GO-24-19-50-AL-ST

### Get to know more:



10U Outdoor Enclosure



12U Outdoor Enclosure



12U Outdoor Enclosure

# TurboAir Line

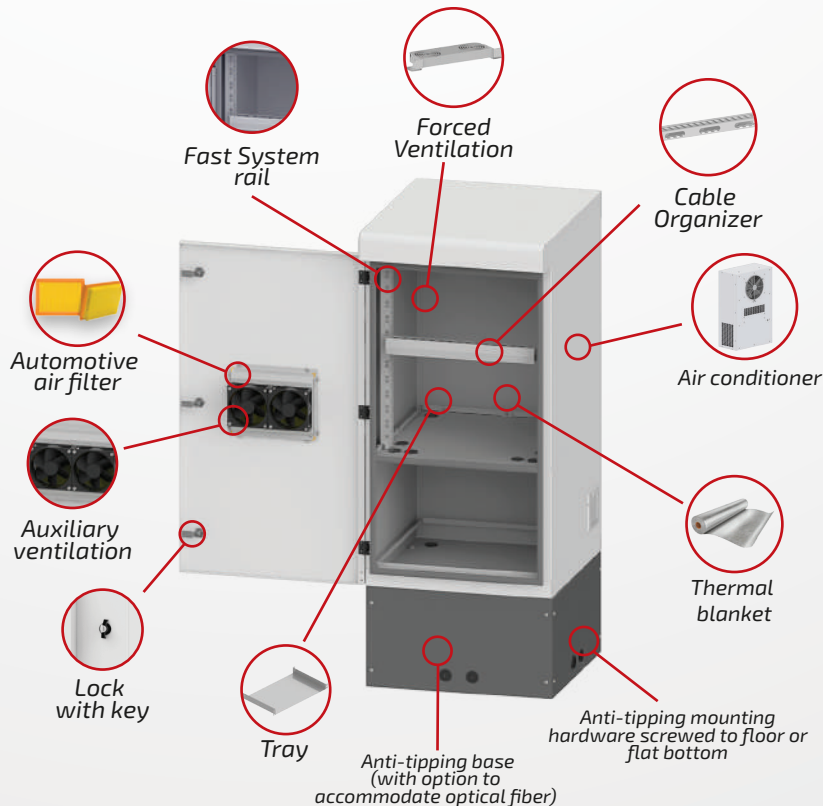
## Built in galvanized steel

Developed in minimized galvanized steel with epoxy paint for protection against corrosion and weather. Versatile assembly, with quick and easy installation. Resistant to vandalism and prepared for fixing to the floor with installation on a concrete base.



	GO-12-19-55-AC-STB	GO-24-19-55-AC-ST
Battery Compartment	38.75 cm	-
Internal dimensions (height x width x depth)	57.4 x 49.6 x 55.5 cm	110.5 x 49.6 x 55.5 cm
External dimensions (height x width x depth)	106.7 x 55.1 x 63.9 cm	126.5 x 55.1 x 63.9 cm
Volume	328 litros	388 litros
Weight	42.75 kg	44.92 kg

### Optionals:



### Other optionals:



Protection Grid



Standard Battery Compartment  
GB-61-55-55-AC



Heavy Battery Compartment  
GB-82-70-74-AC

### Conheça mais:



12U Outdoor Enclosure



12U Outdoor Enclosure



24U Outdoor Enclosure



# Battery Compartment

## Built in galvanized steel

The battery compartments have been specially designed for outdoor environments and have automotive sealing and key lock systems properly prepared to receive padlocks. In addition, they have Zamak protection and are produced with a trivalent zinc plating process. Its door has an opening of up to 180°, facilitating the accommodation of the batteries.



	GB-60-55-50-AC	GB-61-55-55-AC	GB-82-70-74-AC
Line	Standard	Standard	Heavy
External dimensions (height x width x depth)	60 x 56.5 x 56.2 cm	66.5 x 55 x 56 cm	87 x 70 x 71 cm
Door's Height x Width	57.5 x 55 cm	57 x 49,6 cm	70 x 64 cm
Internal Depth	50 cm	50 cm	60 cm
Volume	158 liters	200 liters	280 liters
Weight	21 kg	26 kg	75 kg

### Compatibility:

	GB-60-55-50-AC	GB-61-55-55-AC	GB-82-70-74-AC
Standard Line	GO-12-19-50-AL-STB GO-24-19-50-AL-ST	-	-
Fit Line	-	GO-12-19-50-AC-STB GO-24-19-50-AC-ST	GO-12-19-50-AC-STB GO-24-19-50-AC-ST
TurboAir Line	-	GO-12-19-55-AC-STB GO-24-19-55-AC-ST	GO-12-19-55-AC-STB GO-24-19-55-AC-ST

### Accommodation capacity for stationary batteries:

	GB-61-55-55-AC	GB-61-55-55-AC	GB-82-70-74-AC
26 Ah	12	12	18
36 Ah	12	12	18
45 Ah	08	08	16
60 Ah	08	08	12
80 Ah	06	06	08
105 Ah	06	06	08
150 Ah	02	02	04
170 Ah	02	02	04
220 Ah	-	-	04

# AIR CONDITIONERS

Designed to ensure that the equipment operates efficiently, ALGcom Air Conditioners operate according to the thermodynamic principles of heat exchange, keeping the internal temperature of the outdoor racks controlled with low energy consumption.



## TECNOLOGY

*Microprocessed digital controller with temperature and humidity control parameters*

## DURABILITY

*Aluminum sheet structure with powder-coated finish*

## HEAT EXCHANGERS

*High-efficiency, low-maintenance evaporator and condenser made of copper tubes and aluminum fins*

WARRANTY

**1**  
YEAR

## Air Conditioners

Developed to remove heat from sealed electrical outdoor racks. They have an aluminum sheet structure finished in electrostatic powder painting; have high efficiency axial fans, expansion valve, dryer filter and alternative hermetic compressor that operates with ecological refrigerant gas R-134a.



	SCP-500	SCP-1000
Refrigeration Capacity	500W	1000W
Refrigerant gas	R134a	R134a
External temperature	5 - 45°C	5 - 45°C
Internal temperature	28 - 40°C	28 - 40°C

# MOUNTING HARDWARES

Built in galvanized steel or aluminum, the ALGcom Mounting Hardware has universal fit and modern and innovative design. The products are easy to assemble without the use of electrical equipment, as well as being light and compact.



## VERSATILITY

*Different models with universal fitting that do not require extra drilling*

## DURABILITY

*In structural aluminum or galvanized steel, that ensures greater lightness and protection against corrosion*

## ECONOMY

*Compact packaging that facilitates logistics and transportation*

## PRACTICALITY

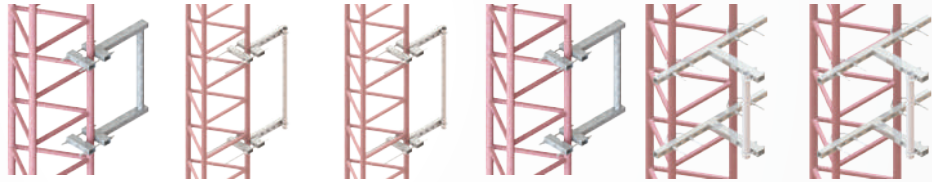
*Quick and easy installation*

WARRANTY

**1**  
YEAR

## Galvanized Steel

Built in steel and finished in fire galvanization, they guarantee stability and corrosion protection even in robust installations.



	SCS-04-06-2	SCA-03-10-2	SCA-03-10-4	SCA-03-06-2	SFE-03-06-2	SFE-06-06-2
Tower position	Corner	Corner	Corner	Corner	Front	Front
Dimension	75 cm	100 cm	100 cm	60 cm	75 x 35 cm	75 x 72 cm
Mast diameter	2"   50.8 mm	2"   50.8 mm	4"   101.6 mm	2"   50.8 mm	2"   50.8 mm	2"   50.8 mm
Symmetrical/Assymetrical Horn Antennas compatibility	Yes	Yes	Yes	Yes	Yes	Yes
Dish Antennas compatibility	0.6   0.9   1.2 m	0.6   0.9   1.2 m	1.2 m	0.6   0.9   1.2 m	0.6   0.9 m	0.6   0.9 m
Parabolic Shielded Antennas compatibility	0.3   0.6   0.9 m	0.3   0.6   0.9 m	0.9 m	0.3   0.6   0.9 m	0.3   0.6 m	0.3   0.6 m
Microwave Antennas compatibility	0.3   0.6   0.9 m	0.3   0.6   0.9 m	0.9 m	0.3   0.6   0.9 m	0.3   0.6 m	0.3   0.6 m
UHP Antennas compatibility	0.6   0.9 m	0.3   0.6   0.9 m	0.9 m	0.3   0.6   0.9 m	No	No
UHPX Antennas compatibility	0.6   0.9 m	0.6   0.9 m	0.6   0.9   1.2 m	0.6   0.9 m	No	No
Grid Antennas compatibility	1.2 m	1.2 m	1.2 m	1.2 m	No	No
Weight	9.5 kg	17 kg	19 kg	16 kg	10 kg	10.95 kg

## Aluminum

Built in naval aluminum, they are resistant and lighter than steel. They are protected against corrosion and have compact packaging that reduces logistics costs.



	SCA-03-03-2	SCA-05-10-3	SFA-04-10-3	SPA-04-10-2	SPA-05-15-3	SRT-00-2000-2	SRT-00-3000-4
Model	Tower corner	Tower corner	Tower front	Wall	Wall	Rooftop	Rooftop
Dimension	40 cm	100 cm	100 cm	50 cm	85 cm	200 cm	300 cm
Mast diameter	1.3/4"   44.45 mm	3"   76.2 mm	3"   76.2 mm	2"   50.8 mm	3"   76.2 mm	2"   50.8 mm	4"   101.6 mm
Symmetrical/Assymetrical Horn Antennas compatibility	Yes	Yes	Yes	Yes	Yes	Yes	Yes
Dish Antennas compatibility	0.6 m	1.2 m	1.2 m	0.6   0.9 m	1.2 m	0.6   0.9 m	1.2 m
Parabolic Shielded Antennas compatibility	0.3   0.6 m	0.9 m	0.9   1.2 m	0.3   0.6 m	No	0.3   0.6 m	0.9   1.2 m
Microwave Antennas compatibility	0.3   0.6 m	0.9 m	0.6   0.9   1.2 m	0.3   0.6 m	0.6 m	0.3   0.6 m	0.9   1.2 m
UHP Antennas compatibility	0.3 m	0.9 m	0.9 m	0.3   0.6 m	No	0.3   0.6 m	0.9   1.2 m
UHPX Antennas compatibility	0.6 m	0.6   0.9 m	0.6   0.9   1.2 m	0.6 m	No	0.6 m	0.6   0.9   1.2 m
Grid Antennas compatibility	No	1.2 m	1.2 m	No	1.2 m	No	1.2   2.0 m
Weight	3 kg	4.5 kg	9 kg	2.2 kg	4.2 kg	15 kg	28 kg





COMPLETE PORTFOLIO OF SOLUTIONS  
**FOR TELECOMMUNICATIONS**

## COUNTRIES WHERE WE ARE PRESENT:



 [www.ALGcom.com.br](http://www.ALGcom.com.br)

 [ALGcomtelecom](https://www.instagram.com/ALGcomtelecom)

 [ALGcomtelecom](https://www.youtube.com/ALGcomtelecom)

 [ALGcomtelecom](https://www.facebook.com/ALGcomtelecom)

 [company/ALGcom](https://www.linkedin.com/company/ALGcom)